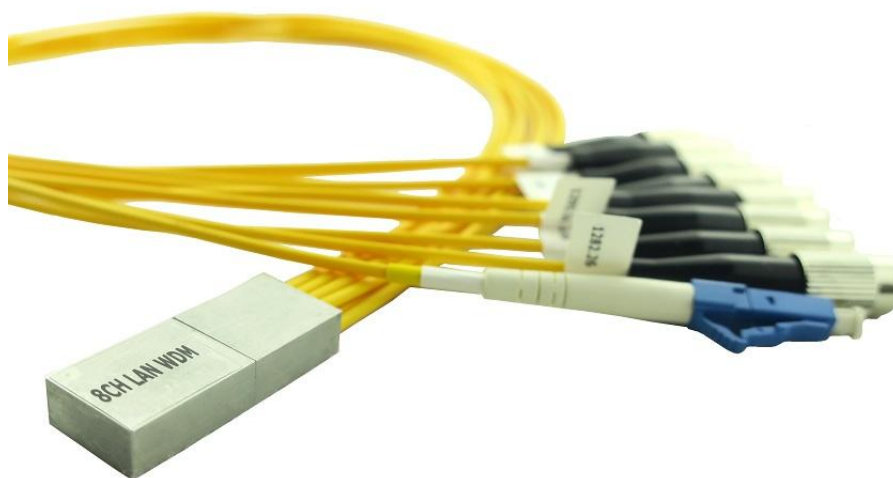




## Ultra Compact 8CH LAN WDM Module



## 1. Performance

This document proposes the specifications of Ultra Compact 8CH LAN WDM Module:

Item		Units	Specification		
			Min	Typical	Max
Channels		4		8	
Channel Spacing		GHz		800	
Passband Width		nm	-1.1	$\lambda_{center}$	+1.1
ITU Wavelength	CH1	nm	1272.44	1273.54	1274.64
	CH2		1276.79	1277.89	1278.99
	CH3		1281.16	1282.26	1283.36
	CH4		1285.56	1286.66	1287.76
	CH5		1294.53	1295.56	1296.59
	CH6		1299.02	1300.05	1301.09
	CH7		1303.54	1304.58	1305.63
	CH8		1308.09	1309.14	1310.19
Center Wavelength		nm	1273.54/1277.89/1282.26/1286.66/ 1295.56/1300.05/1304.58/1309.14		
Insertion Loss(include connector loss)		dB			2.5
PDL		dB			0.5
Passband Flatness		dB			0.5
Adjacent Channel Isolation		dB	30		
Non-Adjacent Channel Isolation		dB	35		
TDL		dB			0.5
Directivity		dB	50		
Return Loss		dB	45		
Fiber Type		-	250um Corning ClearCurve Fiber, 2mm jacket		
Fiber Length		m	0.6±0.05		
Connector Type			Input: LC/UPC, Output: FC/UPC		
Package Size(LxWxH)		mm	34.5x13.8x6.5		
Tensile load		N	5		
Pass Channel IL Uniformity		dB			0.8
Operating temperature		°C	-5-70		
Storage temperature		°C	-40-85		

Note:1. Include the LC and FC insertion loss.

## 2. size reference

NA

## 3. RoHS appliance. GR-1209-Core, GR-1221-Core Generic Requirement and test standard.

Disclaimer: **INFORMATION IN THIS DOCUMENT IS PROVIDED IN CONNECTION WITH OPTIWORKS PRODUCTS. NO LICENSE, EXPRESS OR IMPLIED, BY ESTOPPEL OR OTHERWISE, TO ANY INTELLECTUAL PROPERTY RIGHTS IS GRANTED BY THIS DOCUMENT. EXCEPT AS PROVIDED IN OPTIWORKS TERMS AND CONDITIONS OF SALE FOR SUCH PRODUCTS, OPTIWORKS ASSUMES NO LIABILITY WHATSOEVER AND DISCLAIMS ANY EXPRESS, IMPLIED OR STATUTORY WARRANTY RELATING TO ITS PRODUCTS INCLUDING, BUT NOT LIMITED TO, THE IMPLIED WARRANTY OF MERCHANTABILITY, FITNESS FOR A PARTICULAR PURPOSE, OR NON-INFRINGEMENT. IN NO EVENT SHALL OPTIWORKS BE LIABLE FOR ANY DIRECT, INDIRECT, CONSEQUENTIAL, PUNITIVE, SPECIAL OR INCIDENTAL DAMAGES (INCLUDING, WITHOUT LIMITATION, DAMAGES FOR LOSS AND PROFITS, BUSINESS INTERRUPTION, OR LOSS OF INFORMATION) ARISING OUT OF THE USE OR INABILITY TO USE THIS DOCUMENT.** Optiworks makes no representations or warranties with respect to the accuracy or completeness of the contents of this document and reserves the right to make changes to specifications and product descriptions at any time without notice. Unless specifically provided otherwise, Optiworks products are not intended, authorized, or warranted for use as components in medical applications, or applications intended to support or sustain life.

“Optiworks” and the Optiworks logo are registered trademarks of Optiworks Technologies Co., Ltd. Other names, terms and product names may be trademarks of others.

© 2016 Optiworks Technologies Co., Ltd. All rights reserved.

**Optiworks Technologies Co., Ltd.**

USA

OptiWorks, Inc. 47211 Bayside Pkwy.

Fremont, CA 94538

510-770-8266/510-770-8291

[sales@optiworks.com](mailto:sales@optiworks.com)

**China - Kunshan**

Optiworks(Kunshan)Co.,Ltd.

NO.168Nanhe Road, ETDZ

Kunshan 215300. PRC

Tel: +86 (512) 57630880-23305

[contact@optiworks.com](mailto:contact@optiworks.com)

China - Shanghai

Optiworks(Shanghai)Co.,Ltd.

Room 810-811, Changchun Business Building No.953QinZhou North Road.

Shanghai, 200233 PRC

Tel: +86 (21) 6485-8787

[contact@optiworks.com](mailto:contact@optiworks.com)