

Features

- Low insertion Loss
- Wide Wavelength Range
- High Channel Isolation
- High Stability, High Reliability
- Epoxy-free on Optical Path
- Latching or Non-latching

Applications

- Optical Network
- Protection/Restoration
- Optical Singnal Routing
- Configurable Optical Add/Drop
- Transmitter and receiver protection
- Network Test System
- OADM

The **Mini D2X2B Switch** developed by **Optiworks** is an Electromechanical optic switch and based on unique optics design and packaging for fast and reliable fiber optic switching. The switching between these two states is achieved by applying 5V DC to the switch module. The switch is bi-directional so that the optical input and output can be reversed.

Performance Specifications

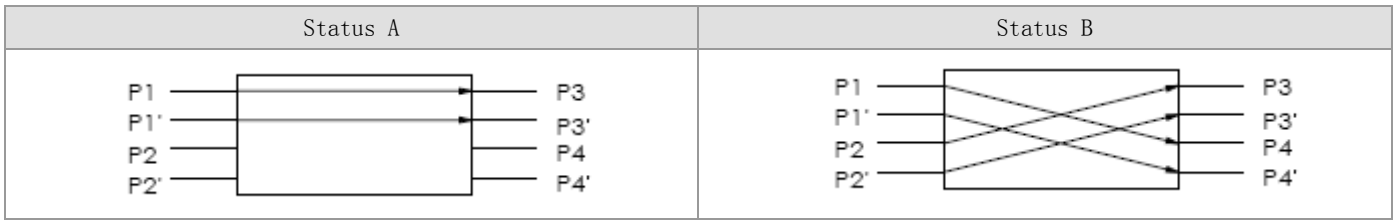
Parameters		OW-Mini D2x2B SW
Wavelength Range	nm	850
Operating Wavelength	nm	850
Insertion Loss	dB	Typ:0.8 Max:1.2
Switch Time	ms	≤8.0
Crosstalk	dB	MM≥35
Return Loss	dB	MM≥30
Repeatability	dB	≤±0.05
Power supply	v	5.0 or 3.3
Lifetime	Time	≥10 ⁷
Transmission Power	mW	≤500
Operating Temperature	°C	-20~+70
Storage Temperature	°C	-40~+85
Dimension	mm	(L)27.0×(W)12.0×(H)8.0(±0.2)

Electrical Pin Configuration

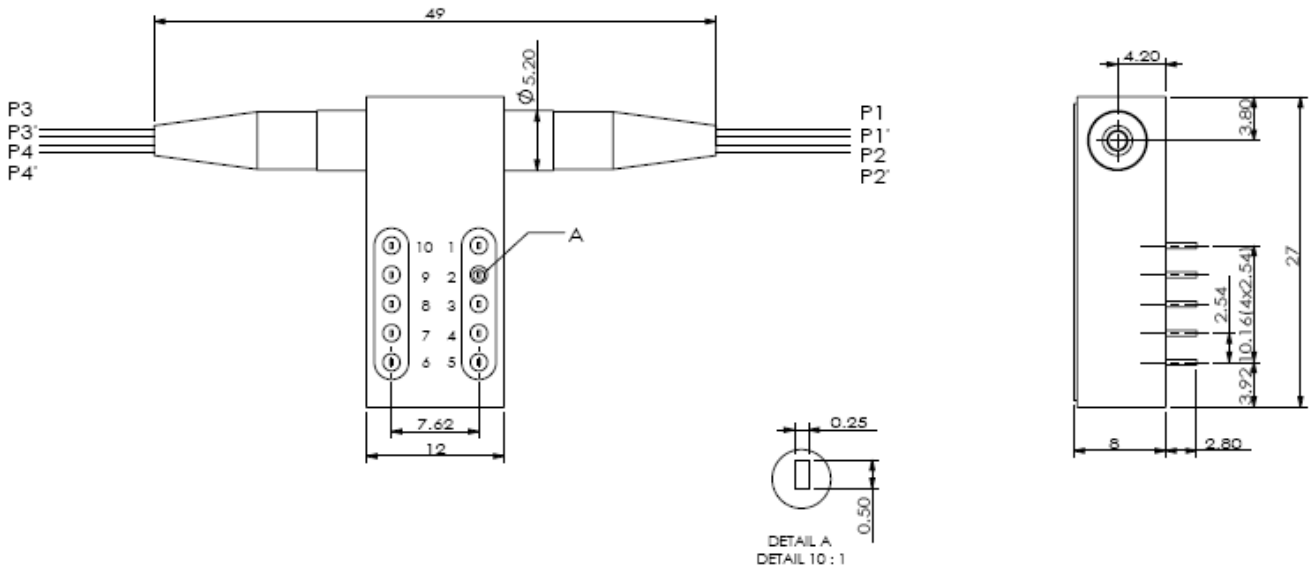
Parameters	Pins	Electric Drive				Status Sensor			
D2x2B	Optical Path	1	5	6	10	2-3	3-4	7-8	8-9
latching	P1-P3、P1'-P3'	--	--	GND	V+	Close	Open	Open	Close
	P1-P4、P2-P3	V+	GND	--	--	Open	Close	Close	Open
	P1'-P4'、P2'-P3'								
Non-latching	P1-P3、P1'-P3'	--	--	--	--	Close	Open	Open	Close
	P1-P4、P2-P3	V+	--	--	GND	Open	Close	Close	Open
	P1'-P4'、P2'-P3'								

Optical Route

Mini D2X2B Mechanical Switch



Dimension



Electrical Parameters

Specifications	Voltage	Current	Resistance
5V latching	4.5~5.5	44~54mA	101Ω
5V non-latching	4.5~5.5	31~38mA	145Ω
3V latching	2.7~3.5	60~78mA	45Ω
3V non-latching	2.7~3.5	42~55mA	64Ω

Ordering Information

Category	Mode	Wavelength	Voltage Type	Control Model	Fiber Type	Fiber Diameter	Fiber Length	Connector
SW=Switch	S=SM M=MM	85=850nm 13=1310nm 14=1490nm 15=1550nm 61=1610nm 13/15=1310/ 1550nm XX=Others	5=5V 3=3V	L=Latching N=Non-Latching	SM=SMF-28e M5=MM50/125 M6=MM62.5/125 XX=Others	25=250um 90=900um 20=2.0mm 30=3.0mm XX=Others	10=1m 13=1.3m 15=1.5m 20=2m mn=m.n Meter	0=None 1=FC/PC 2=FC/APC 3=SC/PC 4=SC/APC 5=ST/PC 6=ST/APC 7=LC/PC 8=LC/APC 9=MU/PC A=MU/APC XX=Others